

## Posiflex PP-6800U Drivers Installing Guide for WinXP

Updated date: 2010/07/22

### Installing Drivers

To install PP-6800U drivers under Windows XP for 32-bit base, follow the instructions below.

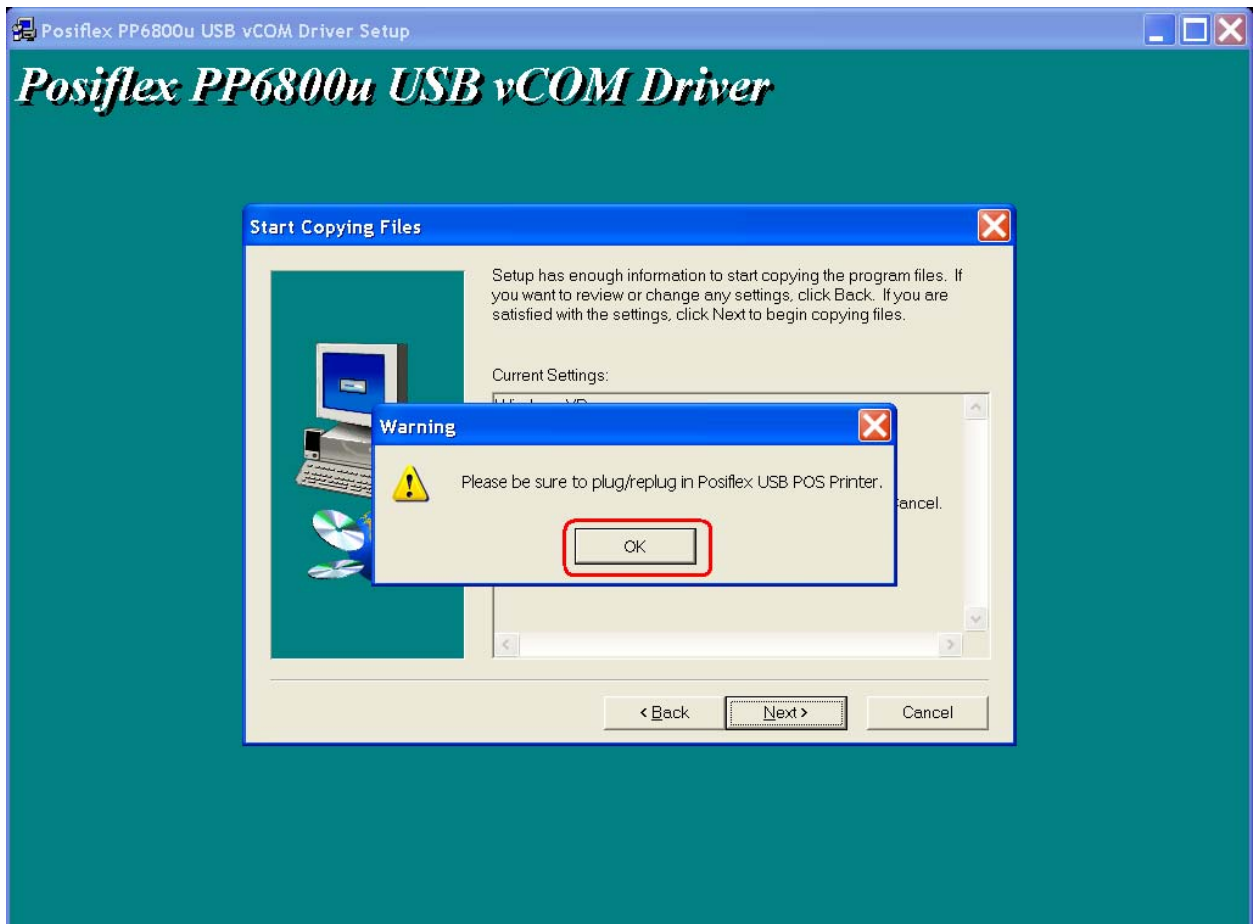
If a device of the same type has been installed on your machine before and the drivers that are about to be installed are different from those installed already, the original drivers need to be uninstalled. Please refer to the uninstall document for further details of this procedure.

This driver is to allocate a COM port using information derived from the cable's physical location on USB port. If the other cables are always plugged into the same USB port, then they will appear to the system as the same COM port.

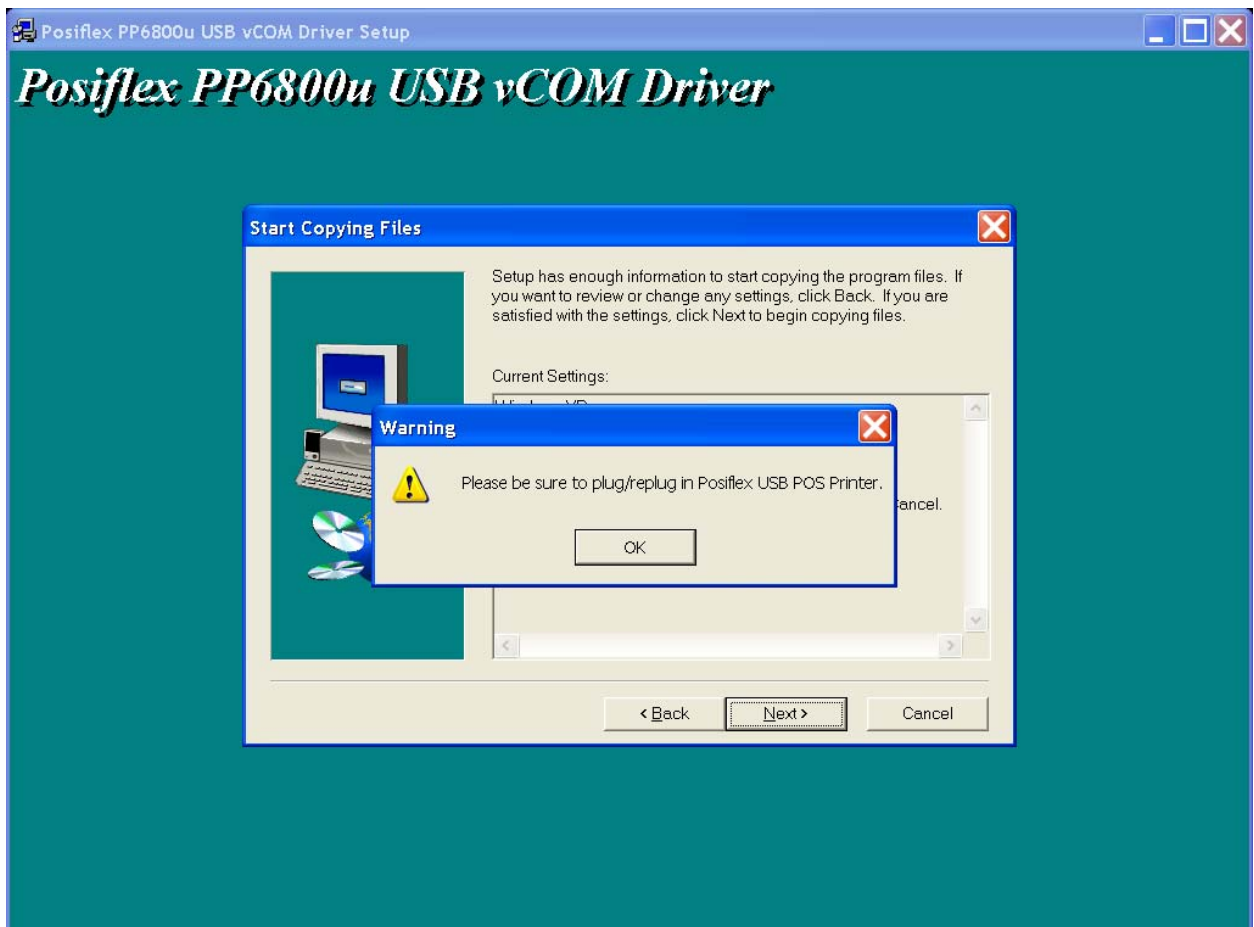
**Not all devices will install to COM5. The COM port allocation is determined by the installation wizard on the basis of the next free com port as designated in the PC registry.**

**If the USB port of Printer is changed, please re-install this driver again.**

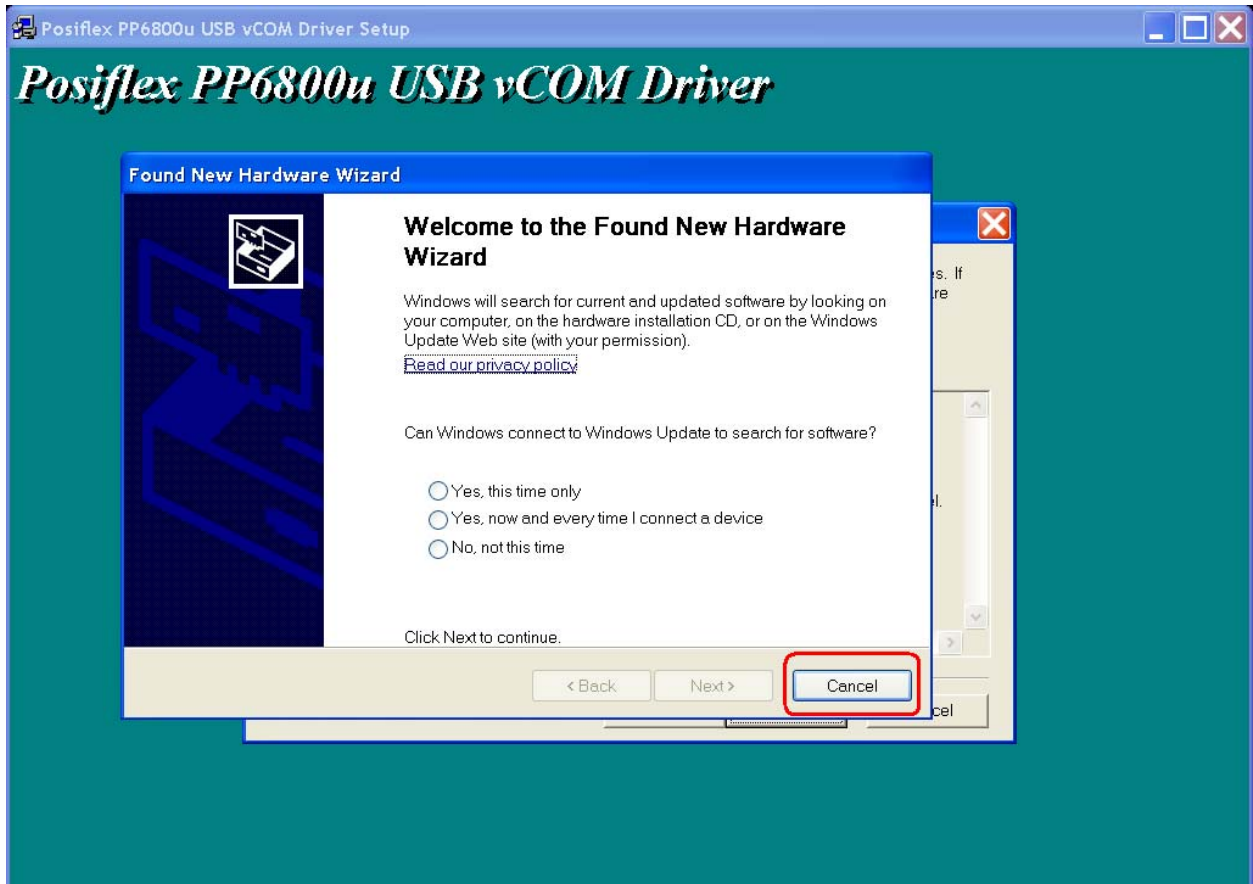
- Insert the PP-6800U USB vCOM Driver CD in the CD-ROM drive.  
Setup will start automatically. If not, run Setup.exe located in the root of the CD.  
Follow the installation instructions below.
- After run the Setup.exe, please press **Next** button.



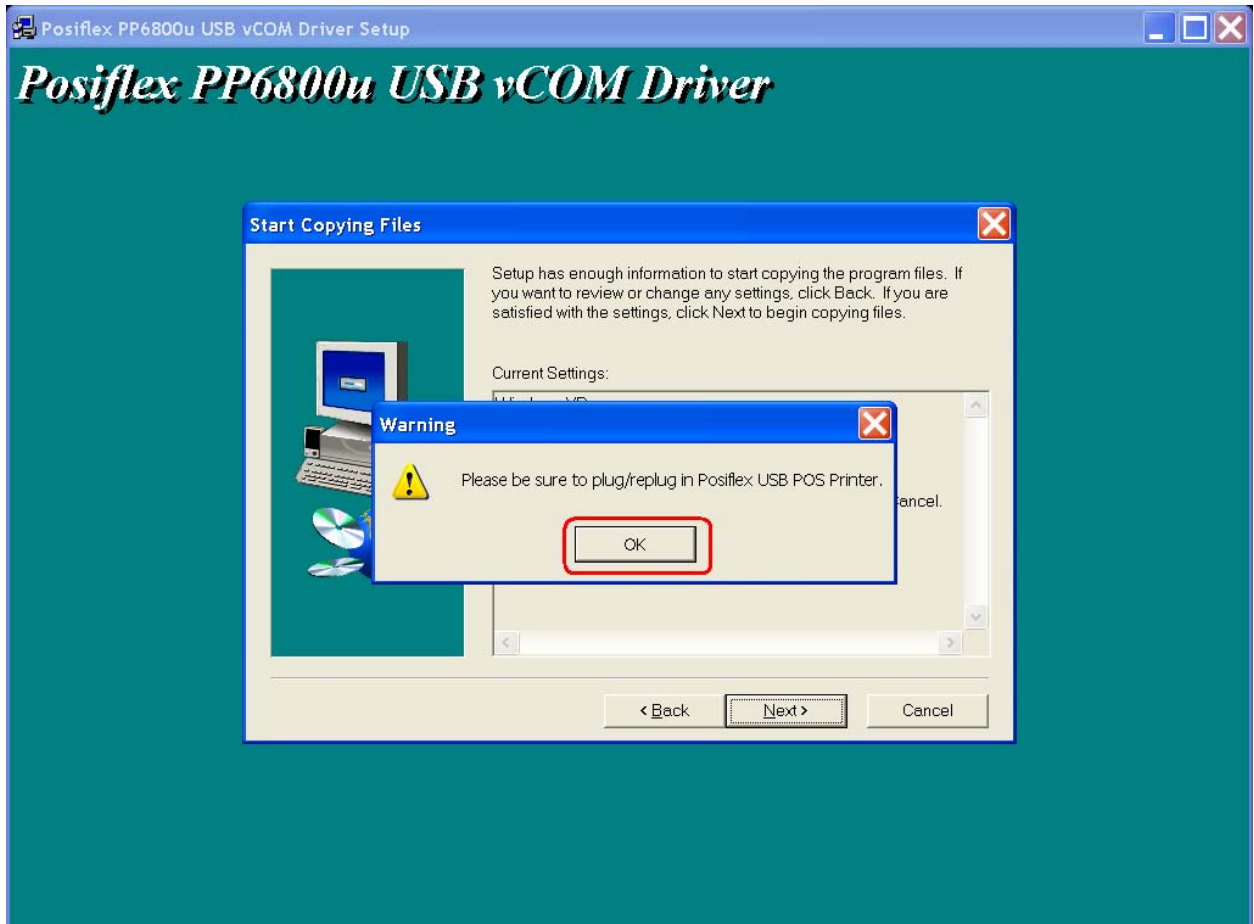
- Connect the Posiflex USB POS Printer to a spare USB port on your PC



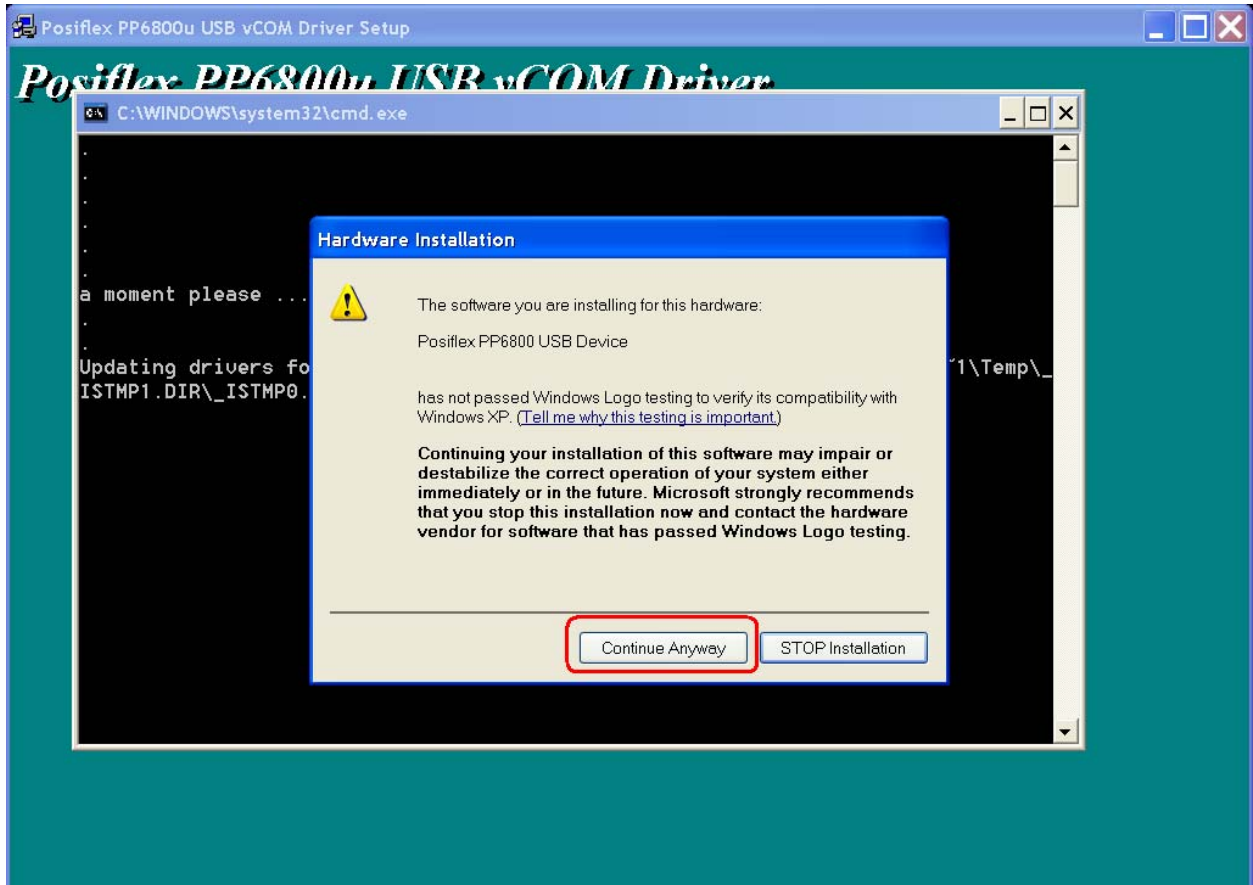
- If Found New Hardware wizard appears, please press **Cancel**.



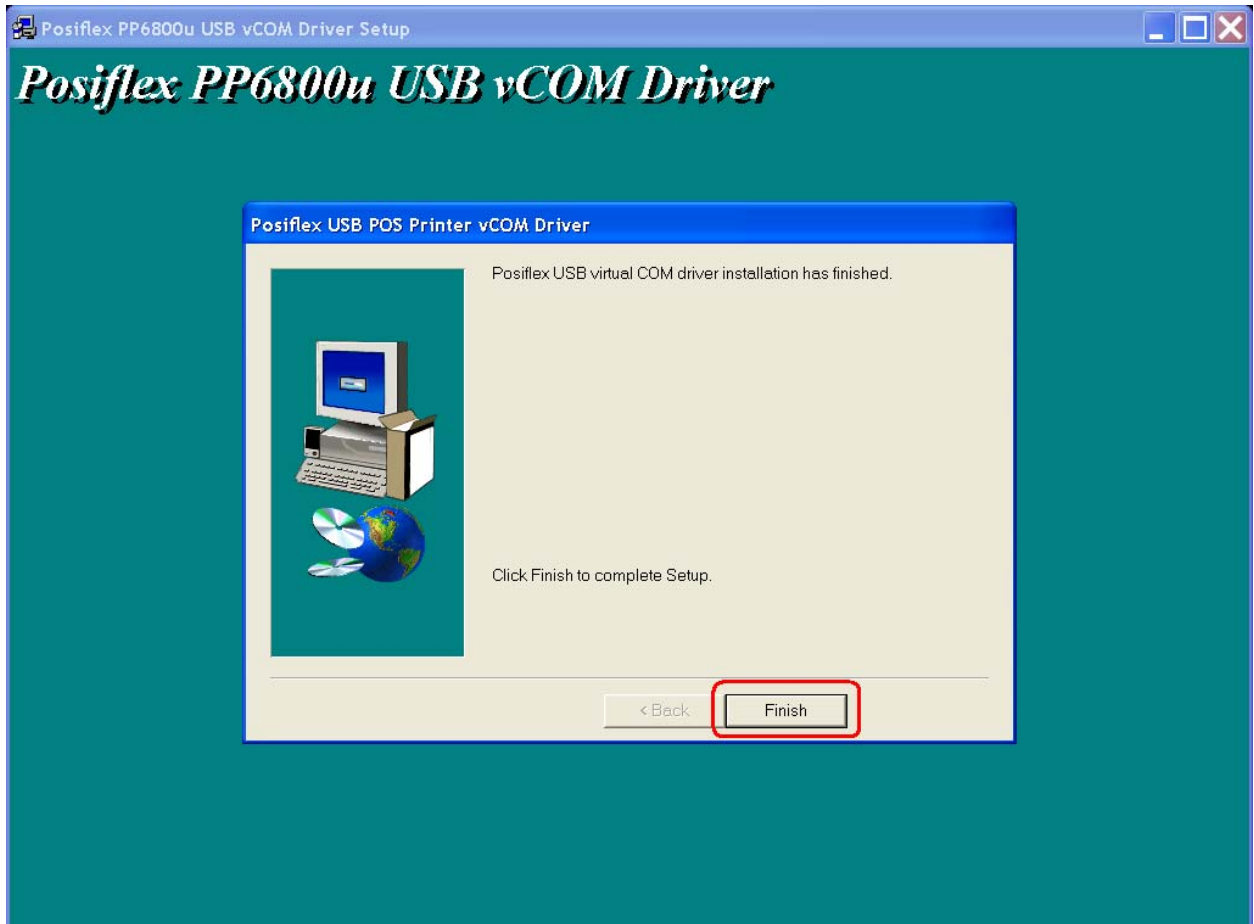
- Press the **OK** button to continue installation.



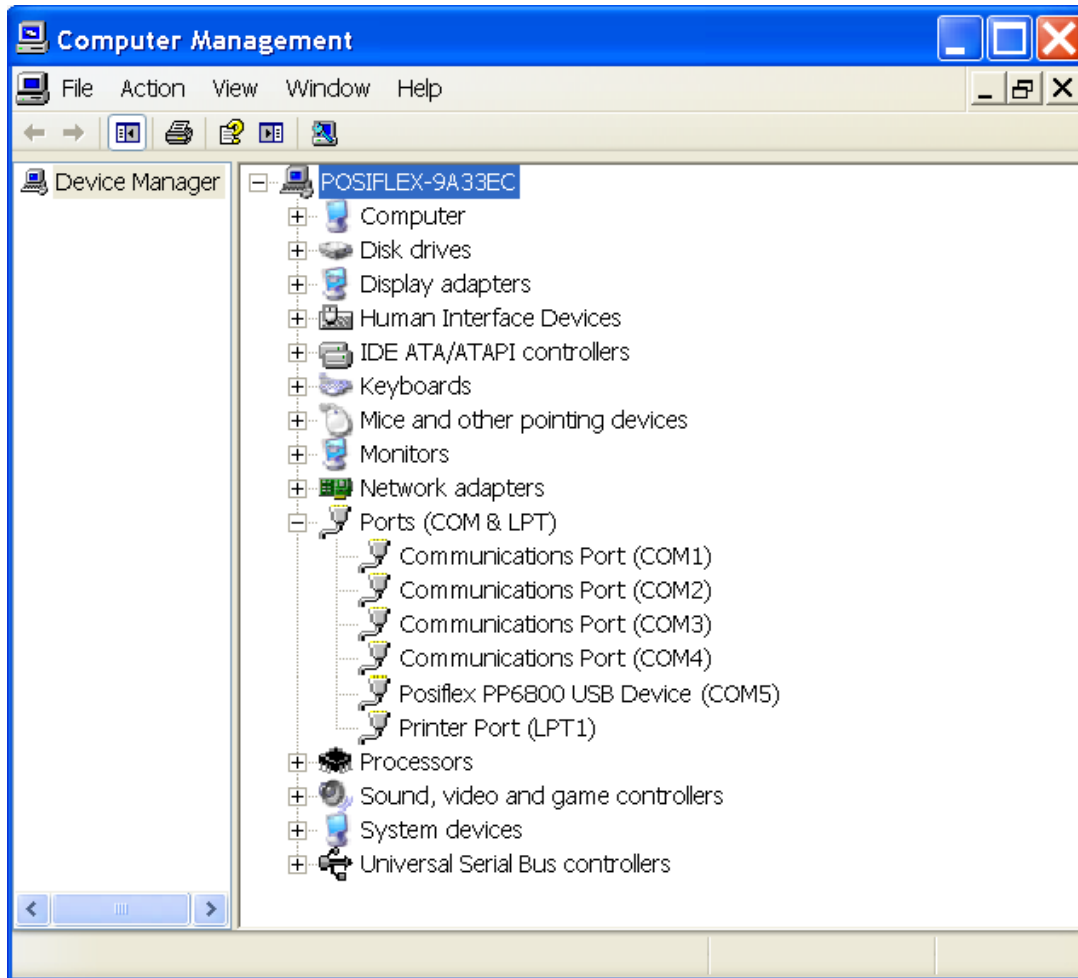
- If Windows XP is configured to warn when unsigned (non-WHQL certified) drivers are about to be installed, the following screen will be displayed unless installing a Microsoft WHQL certified driver. Click on "**Continue Anyway**" to continue with the installation. If Windows XP is configured to ignore file signature warnings, no message will appear.



- Press **Finish** to complete this installation.



- Open the Device Manager (located in "Control Panel\System") then select the "Hardware" tab and click "Device Manger") and select "Ports (COM & LPT)", the device appears an additional COM port with the label **"Posiflex PP6800U USB Device(COM5)"**.

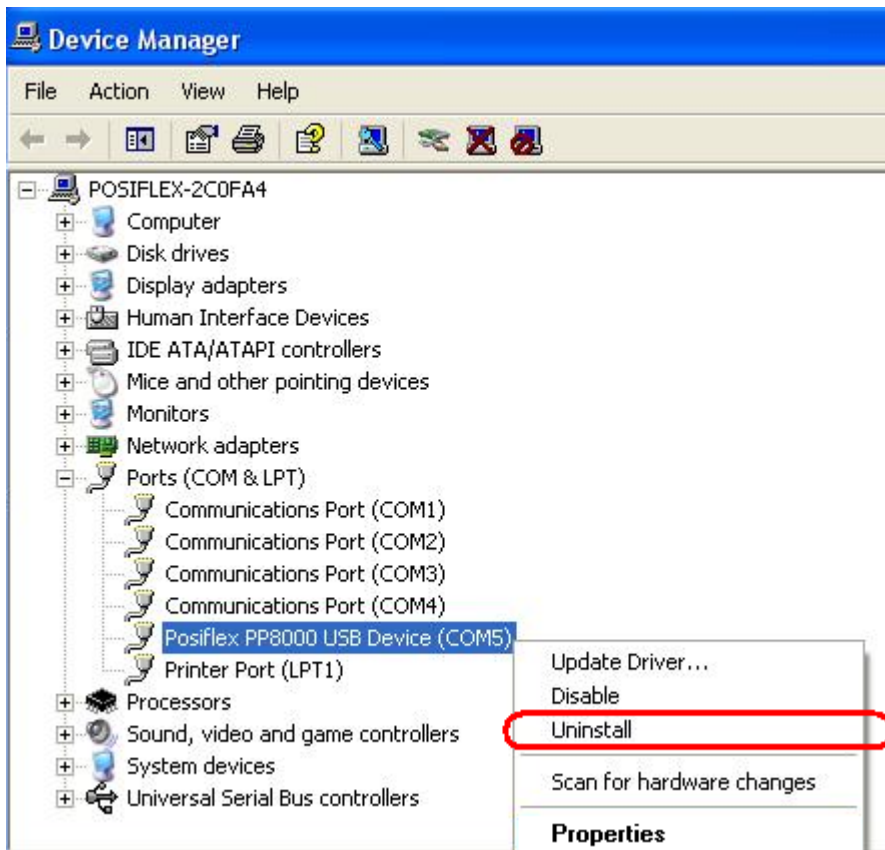




## Uninstalling Drivers

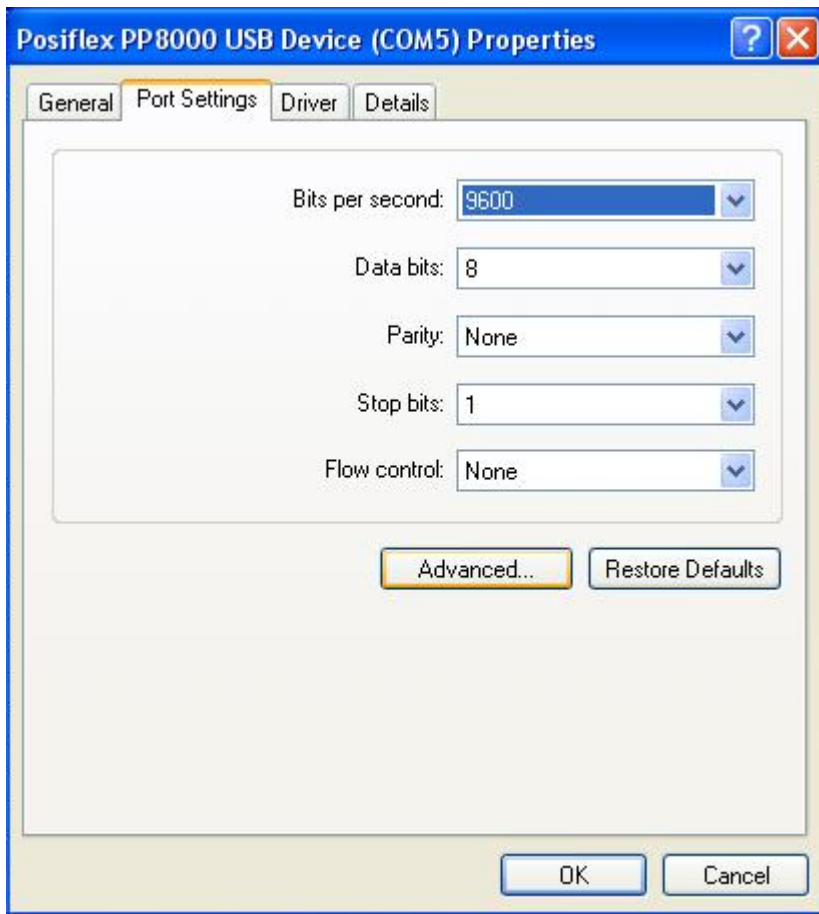
To uninstall PP6800U drivers, follow the instructions below:

- Please connect the PP6800U device to PC.
- Open the Device Manager (located in "Control Panel\System" then select the "Hardware" tab and click "Device Manger") and select "Ports (COM & LPT)".
- Then right-click on the virtual COM port of "PP6800U" and select "Uninstall" from the menu.
- Please tab "Yes" to confirm to remove PP6800U device.



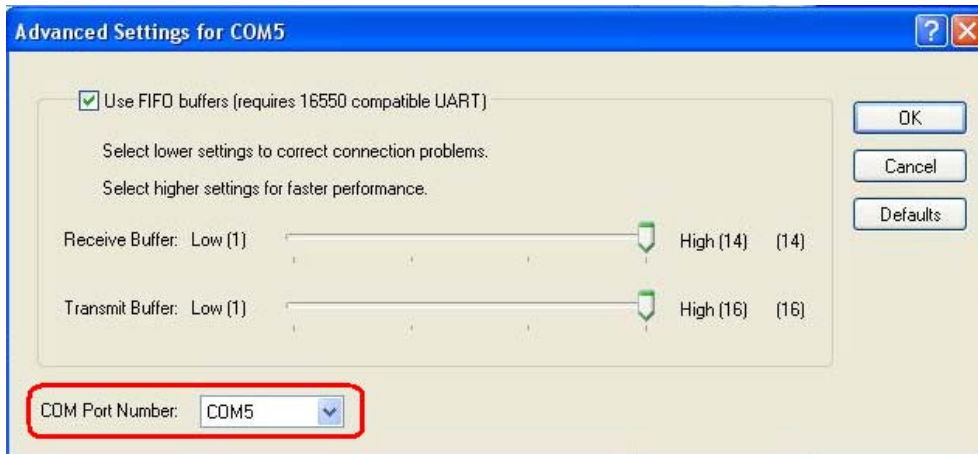
### Advanced drivers options

An advanced properties page is available for devices using this drivers. To access the advanced properties page in Windows 2000 or Windows XP, go to "Control Panel > System" then select the "Hardware" tab and click "Device Manager...". Find the USB serial port you want to change the properties of and right-click on it. Select "Properties" from the menu then select the "Port Settings" tab to get the window below.



This page allows configuration of the basic device COM Port Number. To access more advanced settings, click on the "Advanced..." button to display the advanced properties page (shown below).

This page will allow COM port number to be altered:



### Driver installation fails

If there is error or failed driver installation. This error may appear if a device has insufficient power to operate correctly (e.g. plugged into a bus powered hub with other devices), or may indicate a more serious hardware problem. Also, it may be indicative of USB root hub drivers being incorrectly installed. Please uninstall the PP6800U virtual COM port and re-install driver again. Or please contact the Posiflex technical support department.