

BIXOLON®

Software Manual

Network Auto Installer

Ver. 1.00

<http://www.bixolon.com>

Introduction

This Software Manual provides information about how to install the seagull windows driver to the label printers according to PC operating system (OS).

It is advisable to read the contents of this manual carefully before using the customer display for the first time.

Network Auto Installer is a program that could install label printer seagull windows driver for network printer. Before install label printer seagull windows driver by using this program, label printer IP setting should be preceded. Please set label printer IP by using BIXOLON Net Configuration Tool. You could download Net Configuraion Tool at www.bixolon.com.

We at BIXOLON maintain ongoing efforts to enhance and upgrade the functions and quality of all our products. In following, product specifications and/or user manual content may be changed without prior notice.

Table of Contents

1. Operating System (OS) Environment	4
2. Supported Printers	4
3. Install driver	5
4. Uninstall driver	7

1. Operating System (OS) Environment

The following operating systems are supported for usage.

- Microsoft Windows 7 (32bit, 64bit)
- Microsoft Windows 8.1 (32bit, 64bit)
- Microsoft Windows Server 2012 R2(64bit)
- Microsoft Windows 10 (32bit, 64bit)
- Microsoft Windows Server 2016(64bit)
- Microsoft Windows Server 2019(64bit)

2. Supported Printers

The network auto installer is available for the following BIXOLON label printers.

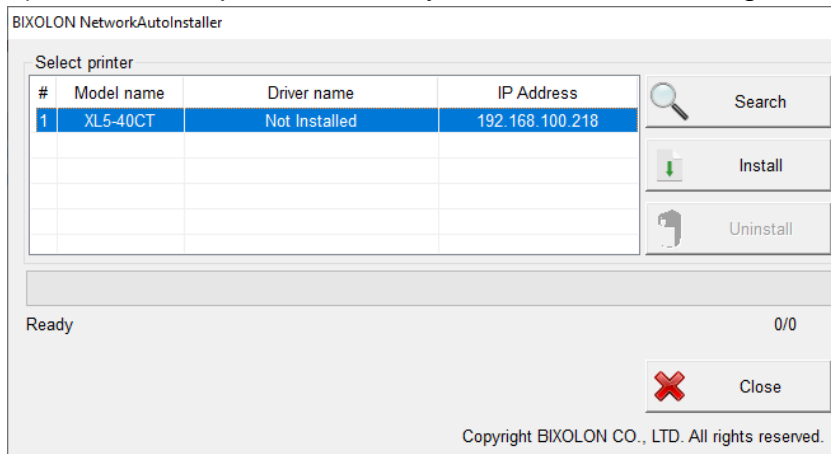
- SLP-DL410/413
- SLP-DX220/223
- SLP-DX420/423
- SLP-TX220/223
- SLP-TX400/403
- SLP-TX420/423
- SPP-L310, SPP-L3000, SPP-L410
- SRP-770III/E770III
- XD3-40d
- XD3-40t
- XD5-40d/43d
- XD5-40t/43t
- XL5-40CT/43CT
- XM7-20/40
- XT5-40/43/46

3. Installation driver

1) Double-click the “NetworkAutoInstaller.exe” icon.

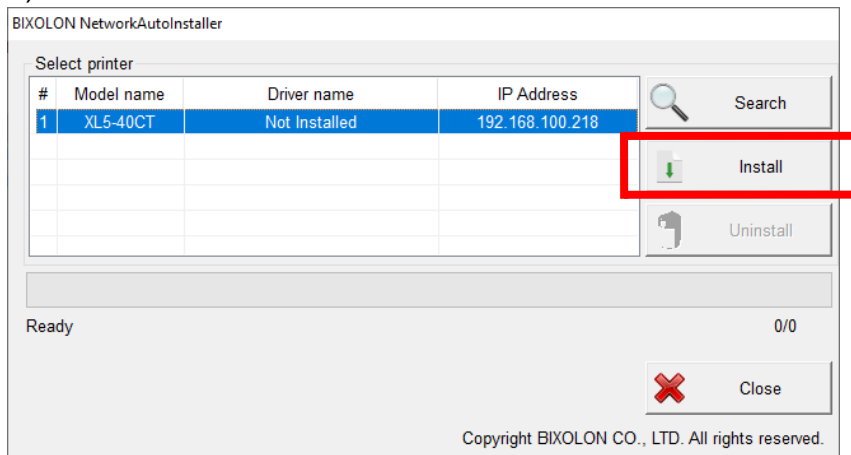
Note Run this utility as an administrator on Windows 7 or later.

2) Select label printers which you want to install seagull windows driver.



Note If one or more label printers are searched, first label printer on the list is automatically selected. If label printer IP is invalid IP or label printer is communicating with the other program, the label printer will not be searched.

3) Click “Install” button



Note To select multiple label printers, hold down ctrl key and click a label printer on the list


Network Auto Installer


4) If seagull windows driver is installed successfully, “Installation was successful” message is displayed and “Driver name” is updated from Not Installed to seagull windows driver name.


BIXOLON NetworkAutoInstaller

Select printer


#	Model name	Driver name	IP Address
1	XL5-40CT	BIXOLON XL5-40CT - BPL-Z	192.168.100.218

 Search

 Install

 Uninstall

Ready 0/0

 Close

Copyright BIXOLON CO., LTD. All rights reserved.

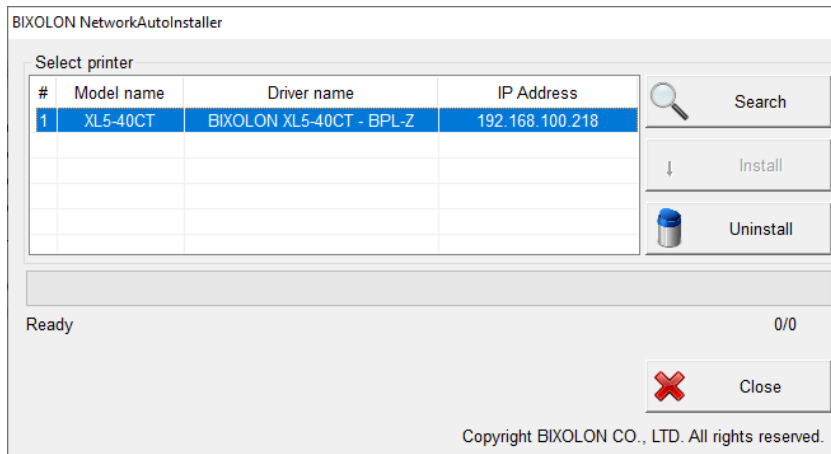
Note Please do not click the label printer list while the installation is in progress.

4. Uninstallation driver

1) Double-click the “NetworkAutoInstaller.exe” icon.

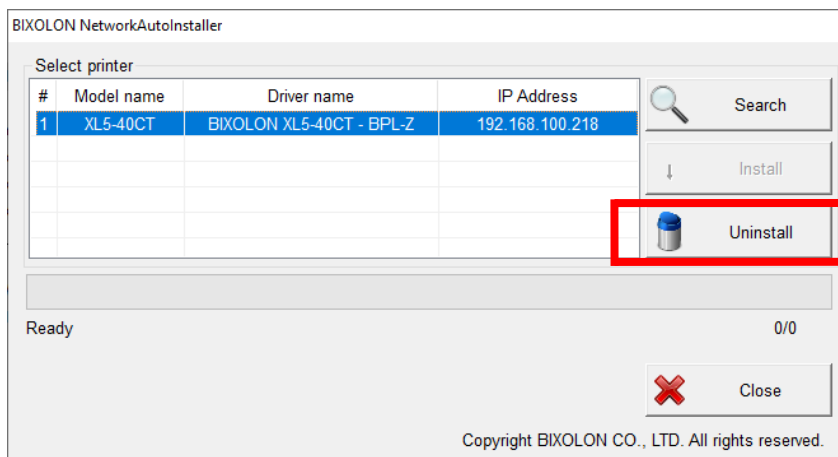
Note Run this utility as an administrator on Windows 7 or later.

2) Select label printers which you want to uninstall seagull windows driver.



Note If one or more label printers are searched, first label printer on the list is automatically selected. If label printer IP is invalid IP or label printer is communicating with the other program, the label printer will not be searched.

3) Click “Uninstall” button.



Note To select multiple label printers, hold down ctrl key and click a label printer on the list


Network Auto Installer


4) If driver is uninstalled successfully, “Uninstallation was successful” message is displayed and “Driver name” is updated from seagull windows driver name to Not Installed.


BIXOLON NetworkAutoInstaller

Select printer


#	Model name	Driver name	IP Address
1	XL5-40CT	Not Installed	192.168.100.218

 Search

 Install

 Uninstall

Ready 0/0

 Close

Copyright BIXOLON CO., LTD. All rights reserved.

Note Please do not click the label printer list while the Uninstallation is in progress.

Copyright Owned by BIXOLON

This User Manual and product are protected under copyright law.

It is strictly prohibited to copy, duplicate, translate or convert into electronic form the whole or any part of the manual and product without the prior written approval of BIXOLON.

BIXOLON maintains ongoing efforts to enhance and upgrade the functions and quality of all our products. In the following, product specifications and/or user manual content may be changed without prior notice.

The BIXOLON logo is the registered trademark of BIXOLON.

Warning - U.S.A

This equipment has been tested and found to comply with the limits for a Class A digital device pursuant to Part 15 of the FCC Rules. These limits are designed to provide reasonable protection against harmful interference when the equipment is operated in a commercial environment. This equipment generates uses, and can radiate radio frequency energy and, if not installed and used in accordance with the instruction manual, may cause harmful interference to radio communications. Operation of this equipment in a residential area is likely to cause harmful interference in which case the user will be required to correct the interference at his own expense.

Notice - Canada

This Apparatus complies with class "A" limits for radio interference as specified in the Canadian department of communications radio interference regulations. Get appareil est conforme aux normes class "A" d'interference radio tel que specifier par ministre canadien des communications dans les reglements d'interference radio.

Caution

Some semiconductor devices are easily damaged by static electricity. You should turn the printer "OFF", before you connect or remove the cables on the rear side, in order to guard the printer against the static electricity. If the printer is damaged by the static electricity, you should turn the printer "OFF".

Copyright © BIXOLON Co., Ltd. 2020. All rights reserved.

Revision history

[illegible]